



FLP J series

LCD video wall

LCD video wall adopts SAMSUNG/LG original LCD panel module to ensure good color effect, real image and backlight brightness uniformity. The panel has ultra-narrow bezel-to-bezel width of only 3.5/1.7/0.8mm, which is virtually seamless. By the advantage of widely optional size of 46" , 49" and 55" , energy-saving, environmental protection, long life span, wide viewing angle, high steady performance, the video wall are ideal for any setting situation that demands a video wall like board room, control room, transportation hub, broadcast studio or shopping center. .



HD Display



Optional controller



1.7mm/ 3.5mm
Bezel



Any combination



Samsung / LG panel



Intelligent Noise
Reduction



Higher brightness

01

Ultra-slim 0.8mm/1.7mm/3.5mm Bezels

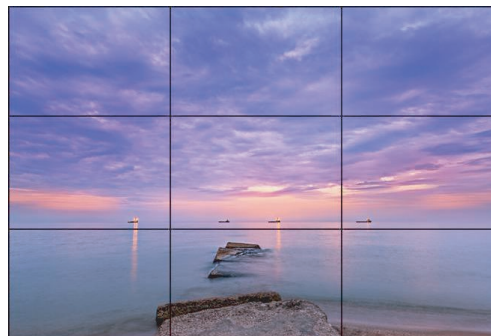
With total bezel-to-bezel width of only 1.7/3.5mm, our J series can provide virtually seamless LCD video wall.



02

Factory Calibration

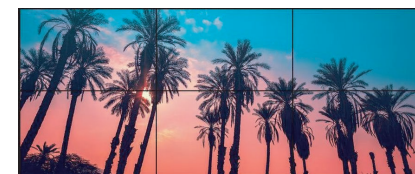
Each J screen has been tuned to ensure the uniformed brightness and color for the whole display.



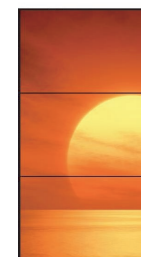
03

Multiple Matching

J display is free for vertical and horizontal application with different array matching of 2*2, 2*3, 3*4 etc.



Horizontal screen



Vertical screen

1. Distributor

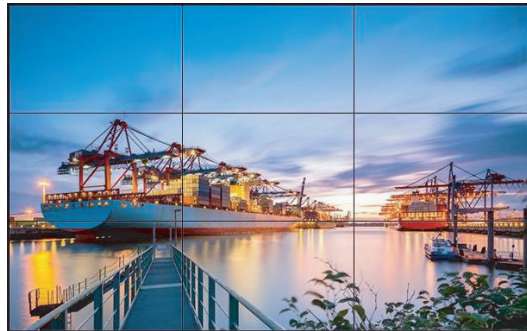


Function 1

*One signal in, and
one signal displays
on each unit*

Function 2

*One signal in, and
one signal displayed
on the whole video
wall.*



2. Matrix



Function:

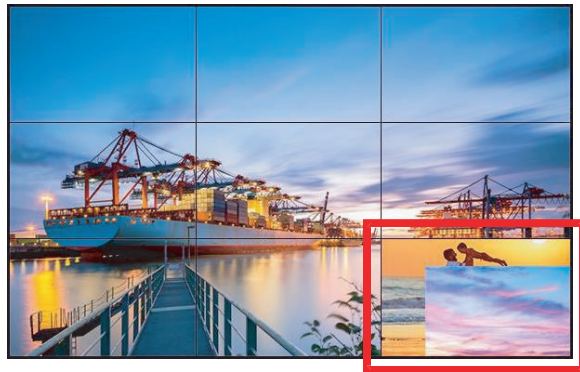
*multiple signals in and multiple signals out, freely switch to any of input
signal to any of the splicing unit .*

3.Processor (Optional)

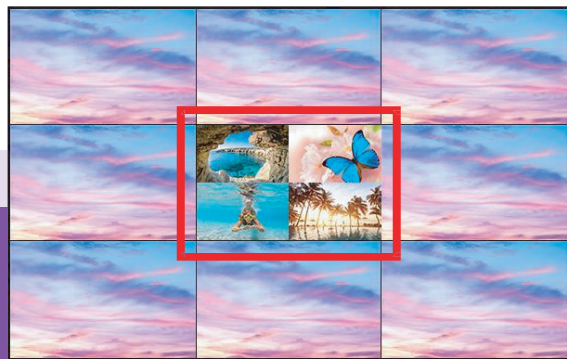
Floating. The sources can float across the entire video wall.

PIP (Picture-in-Picture). It allows users to put a new signal source on another one.

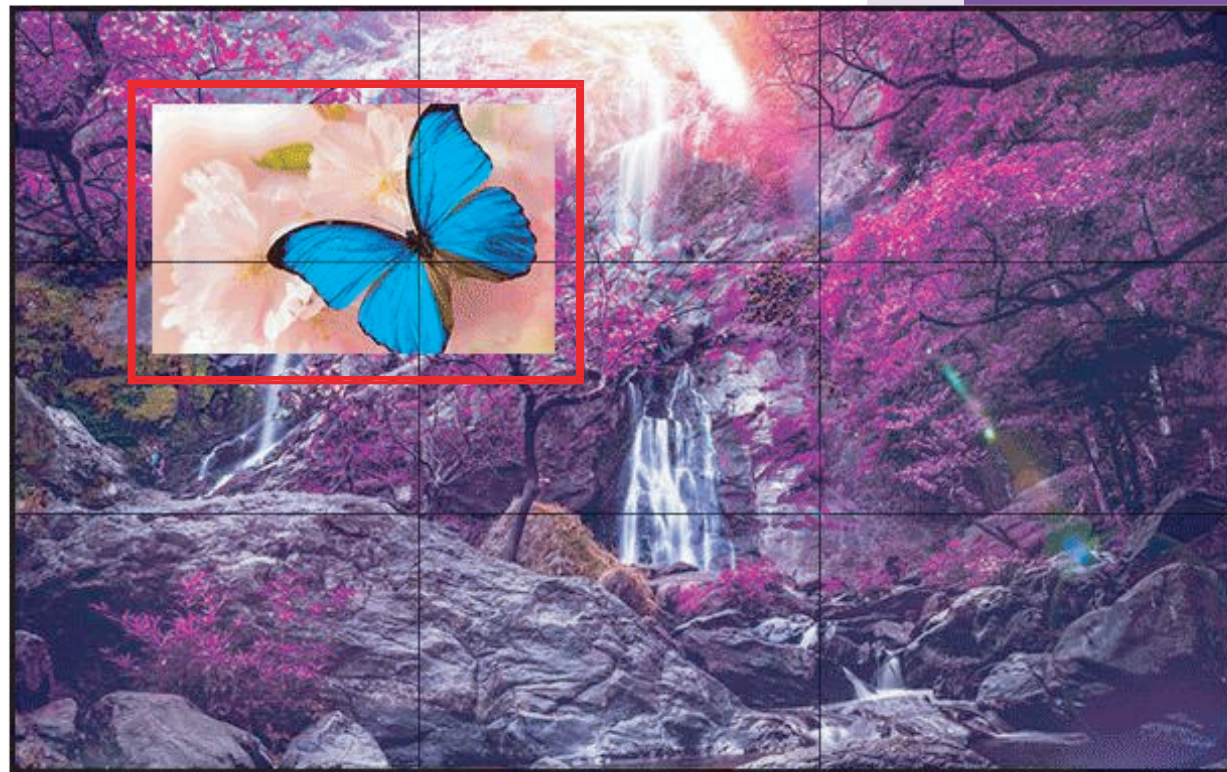
POP. It ensures tiling multiple source in a single screen.



[pip]



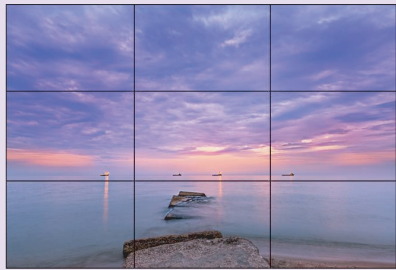
[pop]



[Floating]

Different Installation

Matrix not only has the function of distributor, but also can split the whole video wall into alternate parts. It is often used in a control room. When the video wall is connected with multiply signals from cameras, it can show the signals on alternate screens of it.



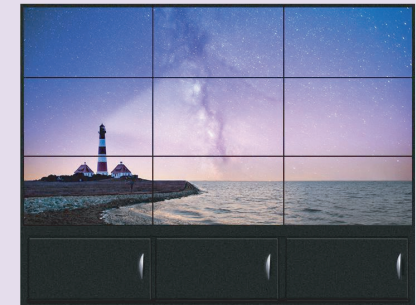
[Rear service wall mount]



[Pop out wall mount]



[Floor stand bracket]



[Floor stand cabinet]

Display	Panel brand	SAMSUNG			LG			
	Screen Size	46"	55"	55"	49"	55"	55"	55"
	Bezel (mm)	3.5	1.7	3.5	3.5	3.5	1.8	0.88
	Resolution	1920x1080(16:9)			1920x1080(16:9)			
	Brightness	500 nits	500 nits	500 nits	500 nits			
	Contrast Ratio (Typical)	3500:1	4000:1	4000:1	1300:1	1400:1	1400:1	1200:1
	Viewing Angle (Horizontal/Vertical)	178/178			178/178			
	Orientation	Landscape / Portrait			Landscape / Portrait			
	Response Time	8ms			8ms			
Connectivity	Input	VGA, DVI, HDMI1, CVBS, USB			VGA, DVI, HDMI1, CVBS, USB			
	External Control	RS232C (In/Out)			RS232C (In/Out)			
	External Sensor	Detachable Type (IR)			Detachable Type (IR)			
Power	Power Supply	AC 100 – 240 W (+/-10 %), 50/60 Hz			AC 100 - 240 W (+/-10 %), 50/60 Hz			
	Power Consumption (Max)	240W			240W			
	Power Consumption(Standby)	<5W			<5W			
Environmental Conditions	Operating Temperature	0°C-50°C			0°C-50°C			
	Operating Humidity	10%~90%			10%~90%			
Dimensions	Product Dimensions	1021.98x576.57x119.7	1211.6x682.4x114.22	1213.5x684.3x116	1077.6x607.8x109.2	1213.5x684.3x116	1211.4x682.2x114.6	1210.51x681.22x112
	Packaging Dimensions (mm)	1120x680x330 (2 pcs in a carton)	1310x800x330 (2 pcs in a carton)	1310x800x330 (2 pcs in a carton)	1170x715x330 (2 pcs in a carton)	1310x800x330 (2 pcs in a carton)	1310x800x330 (2 pcs in a carton)	1310x800x330 (2 pcs in a carton)
Weight	Product Weight	25 KG	35 KG	35 KG	30 KG	35 KG	35 KG	35 KG
	Shipping Weight	27.5 KG	37.5 KG	37.5 KG	32.5 KG	37.5 KG	37.5 KG	37.5 KG
Service	Standard Warranty	1 Year			1 Year			
Accessories	Included	Instructions, Warranty Card, Network Cable, Power Cord, Remote Controller			Instructions, Warranty Card, Network Cable, Power Cord, Remote Controller			
	Optional Mount	Wall Mount			Wall Mount			
		Pop Out Mount			Pop Out Mount			
	Optional Stand	Floor Stand Bracket			Floor Stand Bracket			
		Floor Stand Cabinet			Floor Stand Cabinet			
	Distributor (optional)	One signal source input and multi sources output			One signal source input and multi sources output			
	Matrix (optional)	Multi signal sources input and multi sources output			Multi signal sources input and multi sources output			
	Processor (optional)	Multi signal sources input and multi sources output A single signal manify to 4 windows or float on the whole screen			Multi signal sources input and multi sources output A single signal manify to 4 windows or float on the whole screen			

Specifications and features are subject to change without notice.



FLOATING
POINT

Floating Point Company Limited
contact@floatingpoint.com.hk
www.floatingpoint.com.hk
All rights reserved 01/2021